

IDAHO



aeyc

ASSOCIATION FOR THE EDUCATION OF YOUNG CHILDREN

Joining Together for Quality Early Care and Education

Quality Matters: We Can Make A Difference

You can help Idaho's children...

- Become a member
- Give tax deductible contributions
- Donate materials and books
- Volunteer
- Get involved in children's issues
- Register to vote
- Visit our website at idahoaeyc.org

**Child
Care**



**Are you
the missing piece?**

**Children
& Families**



Community



We all want the best for Idaho children.

Parents want to make the best decisions for their children, providing quality experiences wherever they are. Early care and education **professionals** want to provide the best possible environments for children in preparation for school success. **Policy makers** need to know about quality and how to measure it in order to wisely use state and federal dollars on behalf of Idaho children and their families.

We are all joining together for quality early care and education.

What will **YOU** do today?

Fall 2007

Inside this issue:

| | |
|----------------------|--------|
| President's Message | 2 |
| New Board Members | 2 |
| Fall Conferences | 3 |
| Affiliate News | 3 |
| New Staff Members | 4 |
| Tooth Care Tips | Insert |
| IdahoSTARS Updates | 5 |
| Volunteer/Donor Spot | 6 |
| Community Resources | 7 |

Idaho AEYC

1471 Shoreline Drive
Suite 202
Boise ID 83702-9105
Karen Mason, Exec. Dir.
kmason@idahoaeyc.org

Board Members — Officers & Committee Chairs

| | | |
|---------------------|--|---|
| President | <i>Rosemary Shockley</i> | Affiliate Representatives: |
| Past President | <i>Alice Anderson</i> | NI AEYC <i>Ioana Siegler</i> |
| Vice President | <i>Janine Boire</i> | PA AEYC <i>Claire Yenish</i> |
| Secretary | <i>Barbara Adolay</i> | EI AEYC <i>Cathy Brey and Meg Kennedy</i> |
| Treasurer | <i>Melissa Bandy</i> | TV AEYC <i>Jeanné Hayden</i> |
| Public Policy Chair | <i>Cathy Kowalski</i> | SR AEYC <i>Gena Anderson</i> |
| NAEYC Affiliate Rep | <i>Lorraine Clayton</i> | Student Affiliate Reps |
| Personnel Chair | <i>Lori Fascilla</i> | U of I <i>Jill Bielenberg</i> |
| Accreditation Chair | <i>Annie Dalgetty</i> | BSU <i>Amy Binion</i> |
| Members at Large: | <i>Margie Gonzalez Betty McQuain</i> | |

We need YOUR help to support production of an educational documentary about quality early learning in Idaho.

See Page 6.

Idaho AEYC – Board of Directors



Rosemary Shockley
President 2007-2009

President's Message

It is truly an honor for me to serve you as President for Idaho AEYC. I hope you will feel free to call on me for any assistance I can provide or questions I might be able to answer.

As I thought about this first opportunity to write to all of you, my mind traveled several roads. Then on Saturday, September 29, the Idaho Statesman had WestViews, a series of opinions from other newspapers around the state. I truly enjoyed reading the opinions about early childhood education not only from the Statesman, but also from the Times-News of Twin Falls, the Lewiston Tribune and the Post Register in Idaho Falls. All of these were very supportive of the needs of families in our state — needs which many of the legislators continue to ignore. With a new legislative session just a few short months away, we don't have a lot of time to sit idle!

In the August 2006 issue of Slate, a publication of the Idaho School Boards Association, Representative Ann Rydalch introduced her article entitled Looking Ahead to Pre-kindergarten Training by saying, "It appears the momentum for pre-kindergarten will be continuing throughout the nation. Is this something for Idaho? Only time will tell, and only if parents are involved and want it." (p. 21)

Where is that support and involvement today? We, as professionals, need to step up and be counted. We need to actively work with our parents to be voices for change! Members of the legislature should be listening to the people they are representing, and those people are the parents of the children we serve. We need to ask our parents to speak to their legislators about the needs they face. Only by speaking up and being actively involved in the legislative process, which includes voting, can we be heard.

I encourage each of you, as a professional in the field, to talk to your children's parents, friends, neighbors, fellow professionals, and policy makers in city, county, and state government. Let's be sure that our voices are being heard!

Board Meeting Dates 2007-08

Conference Calls:

November 15, 2007 4:00 MST / 3:00 PST
March 20, 2008 4:00 MDT / 3:00 PDT
May 15, 2008 4:00 MDT / 3:00 PDT

Face-to-Face Meetings:

January 28, 2008 Meeting in Boise, 8:00 am – 4:00 pm
July 14-15, 2008 Meeting in Boise (Time TBD)

Meet Your Newly Elected Board Members

Idaho AEYC welcomes our newest Board members, elected in July 2007 by Idaho AEYC members. Board members serve two-year terms.

Melissa Bandy

Melissa Bandy was re-elected to serve a second term on the Idaho AEYC Board of Directors. She will continue serving as Board Treasurer.

Melissa has been working in the field of Early Childhood Education for over 10 years. She gained experience with young children in teaching at The Children School of Boise in the K-2 classroom, as well as the Cooperative Preschool at St. Michael's as a Two's teacher. Melissa also co-owned an Infant and Toddler Program called The Whole Child for a couple of years.

She received her bachelor's degree in Elementary Education with the emphasis on Early Childhood Education and Early Childhood Special Education at Boise State University. She also received her master's degree in the Blended Certificate (Early Childhood/Special Education) in 2005. Melissa is currently teaching in the Early Childhood Studies Department at Boise State University as an adjunct faculty member.

Melissa lives in Eagle. She's been married to Phil for 14 years and has three young children: Craig 12, Mitchell 7, and Sam 15 months.



Betty McQuain



Since acquiring her bachelor's degree in child development in 1978, she has had a variety of professional experiences in working with young children and their families. Not only has she spent many years in the early childhood classroom as a teacher for Head Start and a number of private and public preschools, but has also worked as a licensed family child care provider and child care program director. She has provided training to parents through parent education programs and to peers through early childhood conferences and in supervisory capacities. Currently she works as a college instructor in the Child Development Program at Idaho State University.

Betty lives in Idaho Falls and is the mother to four daughters, a grandmother to 6 grandchildren, and a perpetual student!

Margie Gonzalez

Margie Gonzalez has more than 27 years of experience in Idaho working in diversity and community outreach. Margie has been actively involved in building community partnerships and involved in working for social change for Hispanics in the state.

Continuing her service to the State of Idaho and its Hispanic population, Margie is the Executive Director of the Idaho Commission on Hispanic Affairs (ICHA). As Director, she works with community leaders, national leaders, and state Legislators representing and advocating for the needs of Idaho's Hispanics. She has been with ICHA for nine years and during her tenure she has taken the lead in bringing programs and resources to our state that focus on the needs of our population. Prior to working with the State of Idaho, Margie worked in the early childhood field for over twenty years.

Margie lives in Caldwell. She is a mother of four children and a grandmother of five beautiful grandchildren.



Affiliate News

Treasure Valley AEYC joins with Idaho Partnerships Conference on Human Services to present the 2007 Fall Conference on Early Childhood Services on **October 20, 2007** at Boise Convention Center. For more information go to www.IdahoPCHS.com.

Snake River AEYC Fall Conference entitled *Educating the Whole Child* will be held **October 26th** and **27th** in Twin Falls. Friday night will be a public event featuring the Blockfest. Saturday will have a keynote by Dr. Julie Ricks-Doneen and breakout sessions including The Project Approach, Creativity, Literacy, and Manipulative Math. Early registration is \$50 for SRAEYC members and \$60 non-members. Late registration is \$15 more. For more information contact Jennifer Patterson at 208-732-6884 or jpatterson@csi.edu. Friday night's session is at The Episcopal Church of the Ascension, 371 Eastland Dr North from 6:00 - 9:00. Saturday's sessions are at The College of Southern Idaho, Taylor Building Rooms 276-277, 315 Falls Ave from 9:00 - 5:00. Registration fee includes lunch.

North Idaho AEYC Fall Conference is scheduled for **October 27th** at North Idaho College in Coeur d'Alene. The conference theme is *Change for Children*, in alignment with the statewide fundraising campaign. Guest speakers include Karen Mason (Executive Director of Idaho AEYC) as the morning keynote and Ken Nesbittat (award-winning children's author) as the luncheon speaker. For additional information, please contact Ioana Siegler, NI AEYC president at 208/765-6955.

Attention ALL Members: Please check your listing on the NAEYC website at www.naeyc.com. Update your email and mailing addresses if necessary. You miss out on valuable information and returned mail costs the organization money.

Affiliate Briefs For more news, visit the Affiliate pages on our website.

North Idaho AEYC, serving the five northern counties of North Idaho, is electing new officers. For more information, contact Ioana Siegler, President at isiegler@msehs.org. Meetings are held the 3rd Monday of the month at 6:00 PM at the Mountain States Early Head Start facility.

Palouse Area AEYC, serving the Palouse Region and the Lewiston-Clarkston Valley, has a new president and is doing some rebuilding. Contact President Claire Yenish at claireyenish@verizon.net to get involved.

PA AEYC—Student Association, serving University of Idaho students, is led by Jill Bielenberg. The group meets the first Thursday of the month at 6:00 PM. Contact Jill at jillb@uidaho.edu for more information.

Eastern Idaho AEYC, serving Eastern Idaho including Pocatello, Idaho Falls, and the surrounding regions, meets in Pocatello. Contact Cathy Brey (cbrey@qwest.net) or Meg Kennedy (megaton39@aol.com) for meeting dates, location, and time.

Snake River AEYC, serving Twin Falls County, the Magic Valley, and Wood River Valley, has monthly meetings on the 4th Tuesday of the month at 6:30 PM in Twin Falls. Contact President Gena Anderson (Anderson_0073@msn.com) to locate the next meeting.

Treasure Valley AEYC, serving the Treasure Valley, is led by President Jeanne' Hayden. Meetings are held at the Idaho AEYC office in Boise at 1471 Shoreline Drive on the 3rd Wednesday of each month. Meetings start at 6:00 PM. For more information contact Jeanne' at haydenj@slrnc.org.

TV AEYC—Student Association, serving Boise State University Students, is led by newly elected president Amy Binion and vice president Doug McCurdy. Kim Bohrer (K.Bohrer.1@hotmail.com) will be the Week of the Young Child chairperson for the group. The executive committee is setting plans for the year. For more information, contact Amy Binion at amylyzb@aol.com.



Jane Zornik
Executive Assistant

Meet New Staff in the Idaho AEYC Office

Jane Zornik came out of semi-retirement this spring to join the agency as Executive Assistant. She brings 35 years of experience in education and special education. *"It is great to be back 'in the loop' and reconnecting with friends and colleagues from my previous network and also to be making new friends and connections,"* reports Jane.

Nicolette joined the staff of IDAHO AEYC in August 2007. Subsequent to graduating from BSU, she worked in Seattle for twenty years during which time she held a variety of accounting positions with King Broadcasting Co., Archdiocesan Housing Authority, and AIDS Housing of Washington. After moving back to Boise with her husband and 3 children, she worked for BSU as a Senior Grant Accountant. Nicolette is *"very pleased to have an opportunity to work with such a wonderful and caring team of individuals and for an organization that provides so much to numerous individuals and families throughout the state of Idaho"*.



Nicolette Betikoetxea
Staff Accountant

Welcome New Faces Serving You in the Regional Offices



Ester Ortiz-Sanchez
Quality Child Care Consultant

Region 4
Boise

Maria Perez
Office Assistant



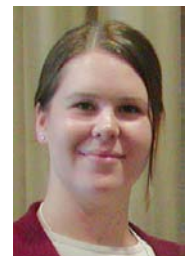
Region 5
Twin Falls

Monica Lopez
Office Assistant

We extend a hearty welcome to these four fine ladies who have added their skills, talents, knowledge, and abilities to the IdahoSTARS staff across the state. Ester brings 6 years of early childhood experience from North Carolina. Maria worked in the Region 5 office prior to moving to Boise. We are glad to have her back with us. Monica adds her bilingual voice to Region 5 to assist the Spanish speaking population in the Magic Valley. And Rebecca's organizational skills and international work experience will support the activities and endeavors of Region 6.

Region 6
Pocatello

Rebecca Barrera
Office Assistant



Mark your calendars

November 7-10, 2007

NAEYC Annual Conference & Expo
Chicago, Illinois

April 13-19, 2008

Week of the Young Child
Barbi Harrison & Jill Bielenberg
Co-chairmen

**We are sporting
a NEW look!**

Check out our
website at

www.idahoaeyc.org

Web store, program support, employment ads,
donation links, resources, and more!



IdahoSTARS Updates



Assessors Receive Training from Expert

Cathy Riley from the University of North Carolina met with environment rating scale assessors and team leaders as she trained in regions around the state. Riley is the co-author of the *All About the ITERS-R* and *All About ECERS-R*, detailed guides that are a companion to the Environment Rating Scales.



Cathy Riley, Research Specialist
Frank Porter Graham Child Development Institute
University of North Carolina, Chapel Hill

The Environment Rating Scales are used by many states to positively guide improvement in child care. The scales have been used in Idaho by many providers for several years, and the assessors were privileged to have this opportunity to work with an expert on the scales.

Idaho is developing *Reaching the STARS*, a voluntary quality rating system for Idaho's child care programs. *Reaching the STARS* uses the scales to help measure quality in child care settings. More information about *Reaching the STARS* is available at www.idahoaeyc.org.

Summit Participants Hear Linda Smith

In mid September, 75 people from IdahoSTARS, Idaho AEYC, DHW, and the U of I Center on Disabilities and Human Development were enthralled by the information shared by Linda Smith, Executive Director of the National Association of Child Care Resource & Referral Agencies (NACCRRA).

It was disappointing to learn that Idaho ranked 52nd out of 52 (50 states, District of Columbia, and Department of Defense) in the study of child care standards and criteria. Smith pointed out the positive side: Idaho has a lot of opportunity for improvement! Her talk, packed with information and statistics, was also upbeat and motivational. She left us with the mantra, "We can do better."



Linda Smith
Executive Director, NACCRRA

Tom Copeland, an author and licensed attorney from Minnesota, spoke on the third day of the Summit presenting information on Child Care Settings and the Americans with Disabilities Act (ADA) and business regulations.



Tom Copeland, Author & Attorney
Director of Redleaf National Institute

The Summit was jam-packed with training and valuable information, but just as important was the

fellowship and networking with colleagues from around the state. A field trip to the Careline 2-1-1 center and the Consolidated Unit during lunch on Thursday provided a unique opportunity to be face-to-face with people that we are usually only ear-to-ear with.

Kudos for a well-organized and productive meeting!



Careline 2-1-1 Operators pose with Vendor Specialist Sherry during a quick break from the switchboards.

Scholarship Notes

Dianna Dussett & Chris Rudeen
Scholarship Counselors

The deadline for direct pay scholarships for all conferences occurring on October 20th has passed! Direct pay is still available through October 12th for conferences occurring on October 27th, and through October 19th for conferences occurring on November 3rd. Reimbursement scholarships are available for all conferences with proof of payment and eligibility.

The deadline for T.E.A.C.H.® academic scholarships for the Spring 2008 school semester is fast approaching! November 15th will be the cutoff date for applications to be submitted to the scholarship office for approval. Those people interested in starting school next summer will have until April 15th to submit applications. Please call the scholarship office for more information! BSU, CSI, and TVCC requests can be directed to Dianna Dussett (208) 345-1090 x21. ISU, LCSC, NIC and now U of I! can be directed to Chris Rudeen (208) 345-1090 x18.

Mentor M a g i c



Quality Consultants, acting in their roles as Regional Mentors, make a huge difference in the lives of Idaho children by working directly with providers, directors, and Mentor/Coaches throughout the state. Pictured above are Martha Anderson, Darla Amundson, Pat Carroll, Ester Ortiz-Sanchez, Tammy McKinney, Judy Boren, and Erika Madsen. Also shown are Tami Reichel and Julaine Ziegert with the Mentor/Coaching — Apprenticeship Program.

To learn more about Mentor/Coaches for Early Care and Education, please dial 2-1-1 and ask for the Quality Consultant in your regional office or Julaine Ziegert, Program Director.



Spotlight on Volunteers and Donors

We Value our Volunteers

Thanks to these individuals for their time and assistance in the office, with the website, answering phones, creating display boards, assembling furniture, copying documents, assisting with mailing, entering data, and offering thoughts and support.

- Barbara Adolay
- Barb Bancroft
- Jeff Currie
- Adam Dussett
- Mike Gantz
- Mark Mason
- Jamie Reichel
- Bruce Schuld
- Suzanne Wallace
- Tony Zornik



Interview with Volunteer Mike G.

Why do you volunteer?

I believe in Idaho AEYC's goals and mission. I am more than happy to volunteer whatever skills I have that the agency can utilize.

Do you volunteer for other programs or activities?

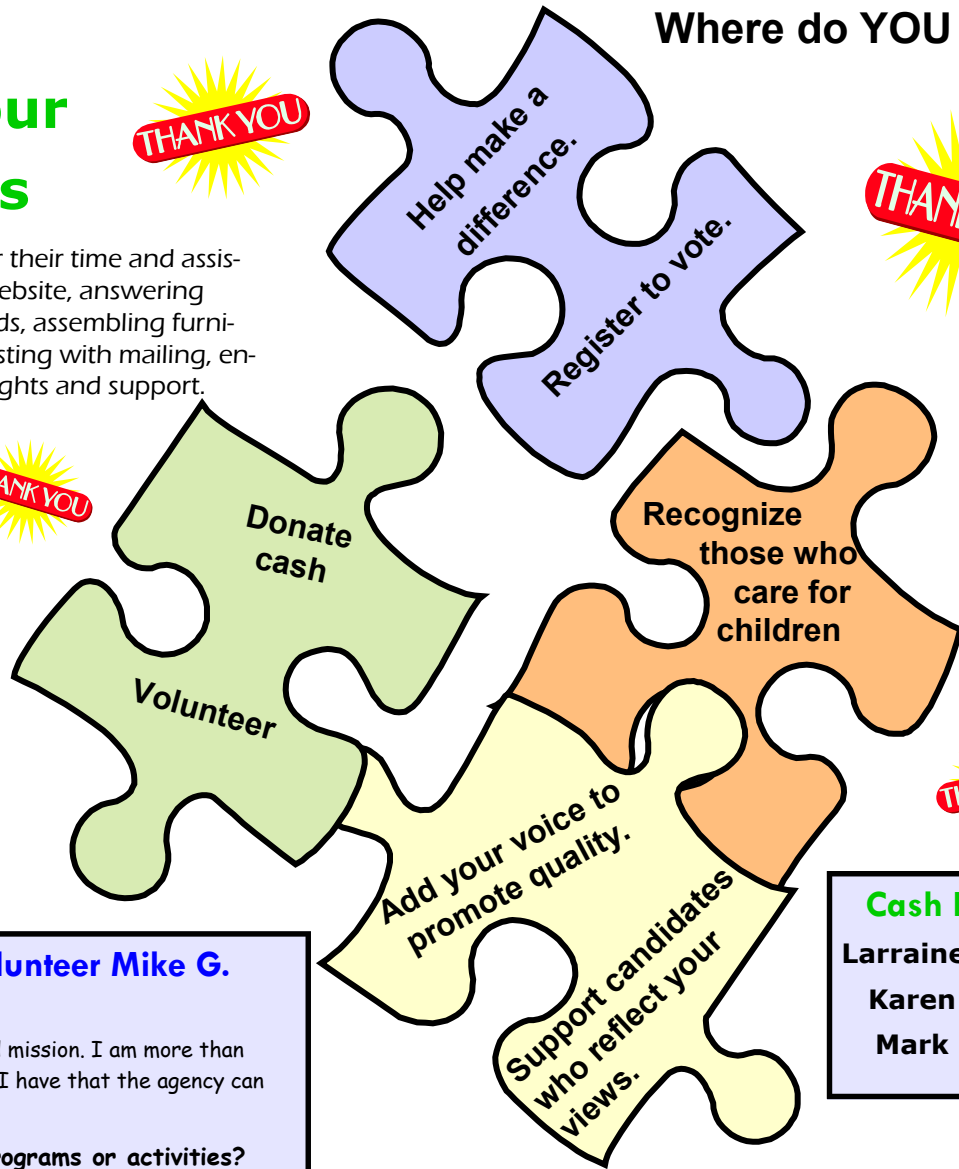
I recently helped organize the linkup between Barbara Morgan (NASA Astronaut) and our local students.

**Thanks, Mike, for volunteering as our webmaster!
We appreciate you!**

Help us NOW!

Idaho AEYC is in the process of producing an educational documentary to highlight the research detailing why quality early care and education is important for all children. This information is critical for parents, employers, and policy makers as we make informed decisions about priorities for children and families in Idaho. Donations can be made by mail or with your credit card on our website at www.idahoaeyc.org. **THANK YOU!**

Where do YOU fit in?



Cash Donors

- Lorraine Clayton
- Karen Mason
- Mark Mason

Volunteer Opportunities

Looking for an organizer to spearhead a committee for an exciting project involving children's art work.

Seeking a data entry specialist to enter data gathered from site assessments. Must be detail oriented. Accuracy is a must.

For more information about these opportunities, contact Jane at jjornik@idahoaeyc.org or 208/345-1090 extension 25.

Community Resources

PROTECTING KIDS FROM LEAD: It's Not Child's Play

By Gary E. Hanes, Community Development Coordinator, Dept. of Housing & Community Development, City of Boise, Boise, ID

We've heard all the news reports about the recall of millions of Chinese-produced toys being shipped to the U.S. The reason: lead-based paint. You may not know exactly why lead-based paint is a problem, and you feel your kids are safe now since these toys are on their way out of the country. Right?

Unfortunately, that's not the case. Many of us don't have to look any farther than our own homes for a more common lead source. If you live in a house or apartment built before 1978, it probably has lead-based paint that doesn't disappear with age. In general, the older the home, the more likely it is to have lead-based paint. Lead-based paint that is in good condition (no peeling or chipping) is usually not a hazard. But, deteriorated paint and friction surfaces such as window sashes or closet doors can send chips and invisible lead dust flying. Kids eat the chips and inhale or ingest the dust. Exposure to lead is more likely in our homes than from one of those banned toys. More than 300,000 American kids will be lead poisoned this year.

No amount of lead is safe. If children under six are exposed to lead, their developing brains and nervous systems can be damaged. If you are pregnant, your fetus can be affected by your exposure. The damage is permanent and a host of symptoms, such as ADD and ADHD may remain unrecognized until much later.

In 1978, long after many other countries, the U.S. banned lead in residential paint. Interestingly, Idaho helped put lead-poisoning awareness on the map because of the

dramatic cases in the Silver Valley of Northern Idaho. Ironically, Idaho has no lead-based paint enforcement program so that's why we rarely hear about it. More than sixty percent of Idaho residences were built before 1978.

Lead paint lingers on the bungalows and charming older homes in some of our most desirable neighborhoods. We scrape, sand and repaint. We realize the American dream through remodeling, but at what cost?

Unless we, or our contractors, are aware of lead-based paint dangers and act accordingly, we can contaminate our homes, our kids, our pets and potentially our neighborhoods. A mere sugar-packet amount of lead paint dust is enough to contaminate an entire house.

What can you do?

Get tested. If you live in an older home, particularly if you have remodeled or repainted, have your family tested. Only an inexpensive blood-lead level test can tell you for sure if your family has been poisoned. This test is free to Medicaid-eligible families.

Learn more about lead. Go to www.epa.gov/lead. There are many informational links including more about lead-safe work practices for home renovations. If you intend to perform do-it-yourself work on your older home, follow lead-safe work practices. If you don't know what that is or can't perform the work that way, find a contractor who can.

More at: www.oregon.gov/DHS/ph/lead/recalls.shtml, www.cdc.gov/nceh/lead, www.hud.gov/offices/lead and www.alphalead.org.



No amount of lead is safe. If children under six are exposed to lead, their developing brains and nervous systems can be damaged.

HEALTHY CHILDREN – HEALTHY PLANET

By Becca Stroebel, Idaho Earth Institute Course Starts Coordinator and Jane Zornik, Idaho AEYC



Today's world is a challenging time to raise children. Kids are bombarded with media advertising for everything from food to toys. How does a family balance peer influences and cultural pressures with meaningful family time amid the demanding schedules of the young preschooler to mom and dad and the frantic world of work? These are some of the topics addressed in the discussion course developed by the Northwest Earth Institute and supported by the Idaho Earth Institute (IEI). Session themes include cultural pressures, family rituals and celebrations, advertising, food and health, time and creativity, technology and the media, and exploring nature.

IEI makes the 8 week course available to interested groups. The course consists of readings on a variety of pertinent topics accompanied by discussion prompts for the facilitators to use in guiding the group. Participants in courses select a class coordinator and members take turns facilitating the discussions. IEI provides the group with a mentor who assists in setting up the class, modeling the first session, and providing guidance on an as-needed basis.

Courses are organized when there are enough people interested in the course. An ideal amount is 8-12 people. This size allows for a variety of viewpoints to stimulate discussion, and time for everyone to be heard. Courses can be organized anywhere in the state. If you are interested in organizing a course with a group of friends, co-workers, neighbors, or others from your circle, please contact Becca Stroebel at beccastroebel@yahoo.com. The cost of this course is \$15 to cover the printing fee of the discussion book. For additional information on this or other courses, check the website at www.idahoeearth.org.

**Idaho Association for the
Education of Young Children**

1471 Shoreline Dr
Suite 202
Boise ID 83702-9105

Phone: 208/345-1090
Fax: 208/345-6569
E-mail: Jzornik@idahoaeyc.org

NONPROFIT ORG
U.S. POSTAGE
PAID
BOISE ID
PERMIT NO. 477



We're on the web at
www.idahoaeyc.org

Idaho Association for the Education of Young Children

VISION

Inspire and lead those who touch the lives of Idaho's children.
Encourage commitment to the ideal that every Idaho child deserves to live a satisfying childhood
that allows him/her to develop to full potential.

MISSION

To improve the quality of life for Idaho's young children and their families by:

- Improving professional practice in early care and education
- Building public understanding and support
- Building and maintaining a strong, diverse, and inclusive organization

VALUES

Idaho AEYC values children.

Celebration of the joys of childhood

Hope for the future

Integrity and responsibility

Leadership development

Diversity and inclusion

Respect for children, families, and the early childhood profession

Educational opportunities

Nurturing relationships
